



RoadKing

by mullins wheels



TRUCK & TRAILER RIMS & WHEELS

PRODUCT GUIDE



RoadKing DEMOUNTABLE RIMS TUBELESS

SIZE ***	OFFSET	FINISH	PART NO.	RIM TYPE	VALVE
6.00 x 17.5	93mm	Silver	700-295	Demountable	405-725
6.75 x 17.5	100mm	Silver	700-305	Demountable	405-725
8.25 x 22.5	118mm	Silver	700-420FW	Demountable	405-728
	118mm	Chrome	700-420CS	Demountable	405-728C
9.00 x 22.5	102mm	Silver	700-465	Demountable	405-726
	127mm	Silver	700-470	Demountable	405-726
	Reverse Steer 73mm	Silver	700-475	Demountable	405-728
11.75 x 22.5	28mm	Silver	700-725	Demountable	405-727
	56mm	Silver	700-730	Demountable	405-727
	70mm	Silver	700-755	Demountable	405-727
	80mm	Silver	700-735	Demountable	405-727
	90mm	Silver	700-765	Demountable	405-727
	100mm	Silver	700-740	Demountable	405-727
	110mm	Silver	700-745	Demountable	405-727
	Dual banded Standard 100 Spacing		700-760	Demountable	Excluded
14.00 x 22.5	28mm	Silver	700-605	Demountable	405-727
	56mm	Silver	700-610	Demountable	405-727
	80mm	Silver	700-625	Demountable	405-727
	100mm	Silver	700-615	Demountable	405-727
	110mm	Silver	700-620	Demountable	405-727
	Dual banded Standard 100 Spacing		700-600	Demountable	Excluded
20.00 x 22.5	Dual banded	Standard 100 Spacing	700-910	Demountable	Excluded

Other Sizes Available By Special Order.



RoadKing SPACER BANDS

SIZE	FINISH	PART NO.	TYPE	SIZE	FINISH	PART NO.	TYPE
15 x 4.00	Silver	720-1540CH	Channel	20 x 4.25	Silver	720-2042CC	Corrugated
20 x 3.625	Silver	720-2035CC	Corrugated	20 x 4.50	Silver	720-2045CH	Channel
20 x 4.00	Silver	720-2040CC	Corrugated				





RoadKing FORGED ALLOY WHEELS

SIZE	FINISH	PART NO.	P.C.D	STUD HOLE	BORE DIA.	** HDS DISC	THICKNESS	WEIGHT KG.	VALVE
7.50 x 19.5	Machined	716-97508275IMA	8/275	24mm ISO	221mm	155 mm	21mm	17.2KG	Included
7.50 x 19.5	Polished Inside	716-97508275IPI	8/275	24mm ISO	221mm	155 mm	21mm	17.2KG	Included
8.25 x 22.5	Machined	716-28210285IMA	10/285.75	26mm ISO	220mm	168 mm	25mm	23.7KG	Included
8.25 x 22.5	Polished Inside	716-28210285IPI	10/285.75	26mm ISO	220mm	168 mm	25mm	23.7KG	Included
8.25 x 22.5	Polished Both Sides	716-28210285IPA	10/285.75	26mm ISO	220mm	168 mm	25mm	23.7KG	Included
8.25 x 22.5	Machined	716-28210335IMA	10/335	26mm ISO	281mm	168 mm	25mm	25.5KG	Included
8.25 x 22.5	Polished Inside	716-28210335IPI	10/335	26mm ISO	281mm	168 mm	25mm	25.5KG	Included
8.25 x 22.5	Polished Both Sides	716-28210335IPA	10/335	26mm ISO	281mm	168 mm	25mm	25.5KG	Included
8.25 x 22.5	Machined	716-28210335RMA	10/335	32mm RETRO*	281mm	168 mm	25mm	25.4KG	Included
9.00 x 22.5	Polished Outside	716-29010285IPO	10/285.75	26mm ISO	220mm	Steer 80 Offset	27mm	25.7KG	Included
11.75 x 22.5	Polished Outside	716-21110285IPO	10/285.75	26mm ISO	220mm	Steer 120 Offset	26mm	26.4KG	Included
11.75 x 22.5	Polished Outside	716-21110335IPO	10/335	26mm ISO	281mm	Steer 120 Offset	26mm	25.8KG	Included

* Retro Fit Nuts Are Available To Suit Single or Dual Wheel Applications ** HDS = Half Dual Spacing

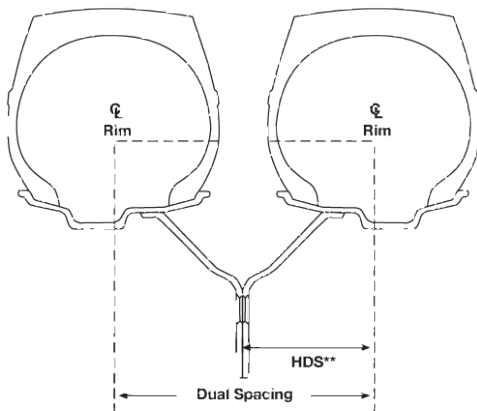
RoadKing RETRO FIT NUTS

FINISH PART NO. DESCRIPTION

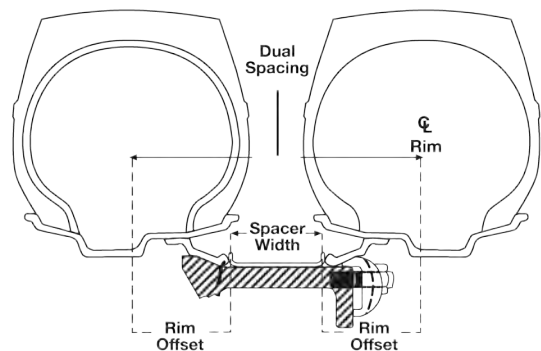
Black	725-980	Front Short - M22x1.5 - RH Thread
Black	725-981	Rear Long - M22x1.5 - RH Thread
Black	725-980L	Front Short - M22x1.5 - Left Hand Thread
Black	725-981L	Rear Long - M22x1.5 - Left Hand Thread
Zinc	725-972	Rear Long - M22x1.5 - RH Thread
Zinc	725-973	Front Short - M22x1.5 - Left Hand Thread
Zinc	725-974	Rear Long - M22x1.5 - Left Hand Thread



DUAL DISC WHEELS



DUAL DEMOUNTABLE RIMS



TRUCK & TRAILER RIMS & WHEELS



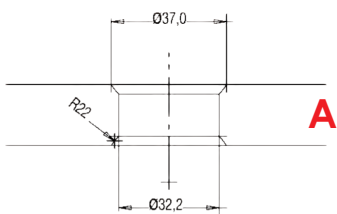
RoadKing

DISC WHEELS TUBELESS

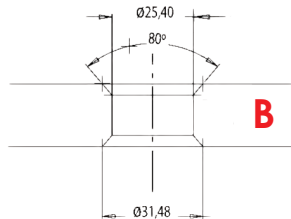
SIZE	STUD HOLE	FINISH	PART NO.	PCD	BORE DIA.	** HDS	DISC THICKNESS	VALVE
6.00 x 17.5	A	Silver	710-205	5/208	150mm	127mm	10mm	405-727
6.00 x 17.5	A	Silver	710-202	6/222.25	164mm	135mm	11mm	405-727
6.00 x 17.5	C	Silver	710-210	10/225	176mm	135mm	11mm	405-727
6.00 x 17.5	A	Silver	710-208	5/203.2	146 mm	127mm	10mm	405-727
6.75 x 17.5	A	Silver	710-215	6/222.25	164mm	140mm	12mm	405-727
6.75 x 17.5	C	Silver	710-220	10/225	176mm	145mm	12mm	405-727
6.75 x 19.5	A	Silver	710-225	6/222.25	164mm	145mm	12mm	405-727
7.50 x 19.5	C	Silver	710-240	8/275	221mm	155 mm	13mm	405-727
8.25 X 19.5	C	Silver	710-250	8/275	221mm	165 mm	14mm	405-727
7.50 x 22.5	A	Silver	710-326	8/275	221mm	160mm	14mm	405-727
7.50 x 22.5	A	Silver	710-329	8/285	221mm	165mm	13mm	405-727
7.50 x 22.5	C	Silver	710-335	10/285.75	221mm	165mm	13mm	405-727
7.50 x 22.5	C	Silver	710-340	10/335	281mm	165mm	13mm	405-727
8.25 x 22.5	A	Silver	710-445	8/285	221mm	165mm	14mm	405-727
8.25 x 22.5	C	Silver	710-447	10/285.75	220mm	165mm	14mm	405-727
8.25 x 22.5	A	Silver	710-450	10/285.75	220mm	165mm	14mm	405-727
8.25 x 22.5	C	Silver	710-460	10/335	281mm	165mm	14mm	405-727
8.25 x 22.5	B	Silver	710-455	10/335	281mm	165mm	14mm	405-727
8.25 x 22.5	D	Silver	710-465	10/335	281mm	165mm	14mm	405-727
9.00 x 22.5	C	Silver	710-500	10/335	281mm	175mm	14mm	405-727
9.00 x 22.5	B	Silver	710-510	10/335	281mm	175mm	14mm	405-727
9.00 x 22.5	C	Silver	710-502	10/335	281mm	175mm	16mm	405-727
9.00 x 22.5	C	Silver	710-502XHD	10/335	281mm	175mm	15mm	405-727
11.75 x 22.5	A	Silver	710-545	8/285	221mm	100mm	14mm	405-727
11.75 x 22.5	C	Silver	710-547	10/285.75	221mm	120mm	14mm	405-727
11.75 x 22.5	C	Silver	710-560	10/335	281mm	120mm	14mm	405-727

** HDS = Half Dual Spacing

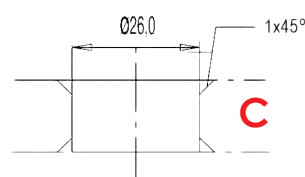
RoadKing WHEEL STUD HOLE TYPES



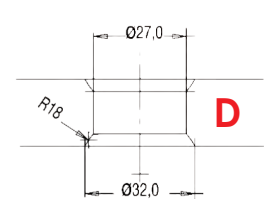
American/Japanese R22
Ball Taper for Double Cap Nut



English 80° Countersink



ISO No Countersink for
Two-Piece Flange Nut



DIN R18 Ball Taper
for Nut and Washer



RoadKing DISC WHEELS TUBE TYPE

SIZE	STUD HOLE	FINISH	PART NO.	TYPE	PCD	BORE DIA.	** HDS	DISC THICKNESS
6.00 x 16	A	Black	715-165	2 Piece	6/222.25	164mm	135mm	10mm
7.50 x 20	A	Black	715-420	2 Piece	8/285	221mm	165mm	14mm
7.50 x 20	A	Black	715-435	2 Piece	10/285.75	220mm	165mm	14mm
7.50 x 20	B	Black	715-445	2 Piece	10/335	281mm	165mm	14mm
7.50 x 20	C	Black	715-455	2 Piece	10/335	281mm	165mm	14mm
8.00 x 20	C	Black	715-512	2 Piece	10/335	281mm	174mm	15mm
8.00 x 20	B	Black	715-507	2 Piece	10/335	281mm	174mm	15mm
8.00 x 20	A	Black	715-502	2 Piece	10/285.75	221mm	173mm	13mm
8.50 x 20	A	Black	715-602	2 Piece	10/285.75	221mm	180mm	13mm
8.50 x 20	C	Black	715-607	2 Piece	10/335	281mm	180mm	13mm
8.50 x 20	C	Black	715-605	3 Piece	10/335 HD	281mm	174mm	16mm
8.80 x 20	A	Black	715-618	2 Piece	10/285.75 HD	221mm	186mm	16mm
8.50 x 24	36mm SR30	Black	715-650	2 Piece	10/335	270mm	190mm	15mm
8.50 x 24	C	Black	715-655	2 Piece	10/335 HD	281mm	185mm	16mm
10.0 x 20	A	Black	715-620	3 Piece	10/335 HD	281mm	214mm	16mm

** HDS = Half Dual Spacing

RoadKing DEMOUNTABLE RIMS TUBE TYPE

SIZE	FINISH	PART NO.	RIM STYLE	TYPE
6.50 x 15	Black	705-035	Demountable	3 Piece
7.50 x 20	Black	705-285	Demountable HD	3 Piece
8.00 x 20	Black	705-305	Demountable	3 Piece
8.50 x 20	Black	705-310	Demountable	3 Piece
10.0 x 20	Black	705-323	Demountable	3 Piece

RoadKing NON DEMOUNTABLE RIMS TUBE TYPE

SIZE	FINISH	PART NO.	RIM STYLE	TYPE
5.50 x 15	Black	705-006	Non Demountable	2 Piece
6.00 x 16	Black	705-130	Non Demountable	2 Piece
9.00 x 20	Black	705-320	Non Demountable	3 Piece



by mullins wheels



RoadKing WARRANTY



Subject to operation at legal load and speed limits, correct tyre fitment and inflation pressure, RoadKing rims & wheels are fully guaranteed by Mullins Wheels Pty Ltd with a TWO YEAR Pro-rata Warranty against material failure or faulty workmanship (excluding finish), from date of sale. Any returns for claim must be freight prepaid to our store. This warranty is in lieu of all other warranties express or implied and in no event shall this warranty be deemed to cover consequential damages of any kind.



Scan QR code
for more info
on RoadKing



10/13



RoadKing
by
mullins wheels

HEAD OFFICE 25-47 Cheviot Road, Salisbury SA 5108
Phone: (08) 8282 3600 Fax: (08) 8281 3232
Email info@mullins.com.au
www.mullins.com.au

SOUTH AUSTRALIA 25-47 Cheviot Road, Salisbury SA 5108
Phone: (08) 8281 3555 Fax: (08) 8281 6262

VICTORIA 474 Mahoneys Road, Campbellfield VIC 3061
Phone: (03) 9357 2333 Fax: (03) 9357 3112

NEW SOUTH WALES 12 Allen Place, Wetherill Park NSW 2164
Phone: (02) 9725 2555 Fax: (02) 9725 2472

QUEENSLAND 14 Success Street, Acacia Ridge QLD 4110
Phone: (07) 3277 8677 Fax: (07) 3277 0303

WESTERN AUSTRALIA 83 Belgravia Street, Belmont WA 6104
Phone: (08) 9277 6266 Fax: (08) 9277 3493